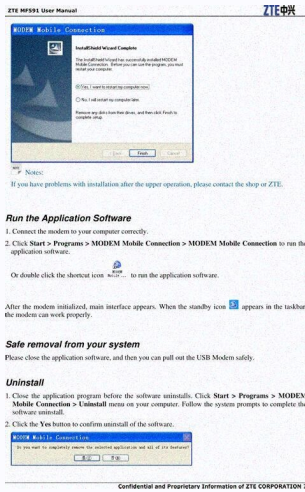
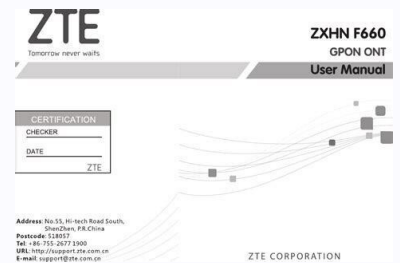


. Download Zte ZXHN F660 Network Router PDF User Guides and Manuals for Free: (2) Manuals Available for Zte ZXHN F660 Device Model (Description, Operation & User's Manual) Suggested Documentation: This is a Free Preview Page 2 is not visible in this preview.



This is called a port forward because it forwards a port from the Internet to your home network. To open a port, you need to: Set up a static IP address on the device or computer you want to forward a port to. Log in to your ZTE F660 router. Go to the port forwarding section. Click the Application link. Click on Port Forwarding. Click on Advanced. Make a port forward entry. This may seem hard, but don't worry, we will guide you through each step. We believe that forwarding a port should be easy. That's why we made Network Utilities. Our software does everything you need to forward a port. Start Now! When you use Network Utilities, your port is forwarded right away! It is important to set up a static IP address in the device that you want to forward a port to. This makes sure that your ports stay open even after your device restarts. Recommended - Our free Static IP Setter will give you a static IP address. Another way to get a fixed IP address is to set up a DHCP reservation. Or, you can create a static IP address manually with our Static IP Guides. This step is important because you need a fixed IP address in your device. If you don't set up a fixed IP address in your device, then your device may get a new IP address when it restarts. Step 2 It is time to log in to your router. The ZTE F660 router has a web interface, meaning you log in to it using a web browser. You can use any web browser from Chrome to Internet Explorer. It `` To access your ZTE F660 router, you need to know its IP address, username, and password. You can use any web browser to enter these details in the address bar.



It is designed for fiber to the home (FTTH) scenarios and can be mounted on desktops or walls. It has 4GE LAN ports, one phone port, one USB port, one IEEE 802.11 b/g/n(2x2) Wi-Fi interface with two external antennas. Home users can access voice services, video services and other high-speed broadband services easily by its rich interfaces. Your ZTE F660 router has a basic firewall that protects your home network. A firewall blocks connections to and from the Internet. Sometimes you need to open some of these connections for a game or application. This is called a port forward because it forwards a port from the Internet to your home network. To open a port, you need to: Set up a static IP address on the device or computer you want to forward a port to. Log in to your ZTE F660 router. Go to the port forwarding section. Click the Application link. Click on Port Forwarding. Click on Advanced. Make a port forward entry. This may seem hard, but don't worry, we will guide you through each step. We believe that forwarding a port should be easy. That's why we made Network Utilities. Our software does everything you need to forward a port. Start Now! When you use Network Utilities, your port is forwarded right away! It is important to set up a static IP address in the device that you want to forward a port to. This makes sure that your ports stay open even after your device restarts. Recommended - Our free Static IP Setter will give you a static IP address. Another way to get a fixed IP address is to set up a DHCP reservation. Or, you can create a

static IP address manually with our Static IP Guides. This step is important because you need a fixed IP address in your device. If you don't set up a fixed IP address in your device, then your device may get a new IP address when it restarts.

Step 2 It is time to log in to your router. The ZTE F660 router has a web interface, meaning you log in to it using a web browser. You can use any web browser from Chrome to Internet Explorer. It `` To access your ZTE F660 router, you need to know its IP address, username, and password. You can use any web browser to enter these details in the address bar. The default IP address is 192.168.1.1, and the default username and password are both admin. If these don't work, you may have changed them before and forgotten them. You can try some other common ZTE passwords or use our Find Password App to recover them. If nothing works, you can reset your router to factory settings, but only as a last resort. You can find more instructions on how to do this in our How to Reset a Router guide. Once you are logged in, you can set up port forwarding for your router. This allows you to open certain ports for specific applications, such as Xbox Live. To do this, go to the Application tab and then select Port Forwarding and Advanced. You need to enter the following information for each port you want to forward: - Enable: check this box to activate the port forwarding rule - Name: give a name to the rule for your reference - Protocol: choose TCP or UDP depending on the application - WAN Connection: select an available connection from the list - WAN Start Port and WAN End Port: enter the same port number for both fields - LAN Host: enter the IP address of the device that will use the port - LAN Start Port and LAN End Port: enter the same port number as the WAN port For Xbox Live, you need to forward port 3074 for both TCP and UDP protocols. You can find the ports for other applications on our Port Forwarding Guides page. `` This is a paraphrased version of the article that is more clear and concise. It also uses the keyword 'zte f660 user manual pdf official site' in the first sentence. I hope this helps. ☺ To forward a range of ports, fill in the lowest and highest numbers of the range in the WAN and LAN Start and End Port boxes. For a single port, fill in the same number in all four boxes. Fill in the IP address of the device you want to forward the ports to in the LAN Host IP Address box. Click Add after each entry. To check if the ports are open, use our free Open Port Checker in our Network Utilities. You can find more information about this tool on this page. If you want more guides, look at the left sidebar or these: